

CONSUMABLES

# CONSUMABLES

*by Fim Medical*

## A PARAMOUNT REQUIREMENT



### **FILTERS**

Ergofilters® SP1  
and SP1M



### **NOSE-CLIPS**

for SPL10USB and Q13  
spirometers. Available in  
4 colours.



### **QFLOW® SENSORS**

for Spirolyser®  
Q13 spirometer



### **PIPETTES & TRAPPERS**

for TABATABA®v2



### **EARPAD COVERS**

for Audiolyser® and  
Visioclick®

CE  
0459

**FIM**  
Medical



# FILTERS

## ERGOFILTER® SP1 AND SP1M

The **Ergofilter® SP1** (with mouth piece) and **SP1M** (with flexible jaw piece) are bacterial and viral filters intended for use with the FIM MEDICAL brand SPL10 USB spirometer. **Ergofilter®** filters are designed and adapted for respiratory function exploration tests (spirometry). **Ergofilter®** filters are designed so that their cumulative resistance to that of the SPL10 USB spirometer does not exceed ATS/ERS recommendations.

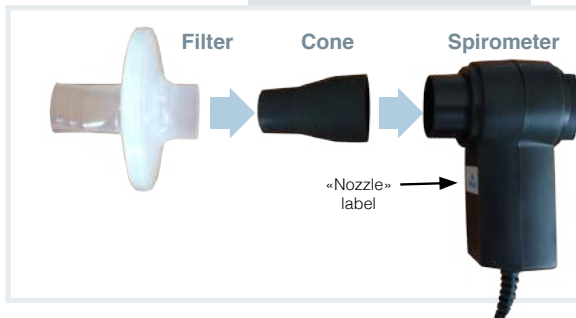
Filter type	Single-use filter
Packaging	Individual, non-sterile sachet
Expiry date	Refer to box label
Storage / Transport	T° 0°C - 50°C Humidity 75% max.
Membrane type	Electrostatic
Bacterial retention (Aerosolisation of bacillus atrophaeus nctc 10073 microorganisms)	99,99% <sup>(1)</sup>
Viral retention (Aerosolisation of ms-2 coliphage ncimb 10108 microorganisms ms-2 coliphage ncimb 10108)	99,84% <sup>(1)</sup>
Résistance at 14L.s-1	1,1 cm H <sub>2</sub> O.L <sup>-1</sup> .s
Dead space	65mL
Medical class	Ila

<sup>(1)</sup> Bacterial and viral efficacy trials on the Ergofilter® filter were performed by the Public Health England laboratory, Borton Down, Salisbury, Wiltshire, SP4 0UG United Kingdom.



### WARNING

- Always use an Ergofilter® SP1M or an Ergofilter® SP1 between the patient and the spirometer
- Ergofilter® SP1M and Ergofilter® SP1 are single-use
- Use of filters does not exempt the equipment from regular disinfection
- Used accessories should be disposed of with biologically soiled waste recycling



#### Ergofilter® SP1 or SP1M filter assembly

- 1 Remove filter from packaging.
- 2 Do not touch the mouth part of the filter with the fingers, but hold it by the circumference.
- 3 Use the filter the right way around; it is not reversible.
- 4 Assemble the cone onto the spirometer («nozzle» label side) then connect the filter to the cone.



# NOSE-CLIP

## FOR SPIROLYSER® SPL10 USB AND Q13

The **FIM MEDICAL nose-clip** is an accessory developed specifically for SPL10 USB and Q13 spirometers.

#### Nose-clip assembly:

- Remove the nose-clip from packaging
- Do not touch the foam part with the fingers, but hold by the main part
- Position the nose-clip on your nose so as to block the nostrils

**Use:** Systematically change the single-use nose-clip between each patient

**Waste Disposal:** Used accessories should be disposed of with biologically soiled waste recycling

Nose-clip with biocompatible foam	Single-use
Expiry date	Refer to box label
Storage / Transport	T° 0°C - 50°C Humidity 75% max.
Medical class	Ila



### WARNING

- Reserved for use by doctors or health professionals
- Never allow a child to play with a nose-clip
- Nose-clip is single-use

# QFLOW<sup>®</sup> SENSORS FOR SPIROLYSER<sup>®</sup> Q13

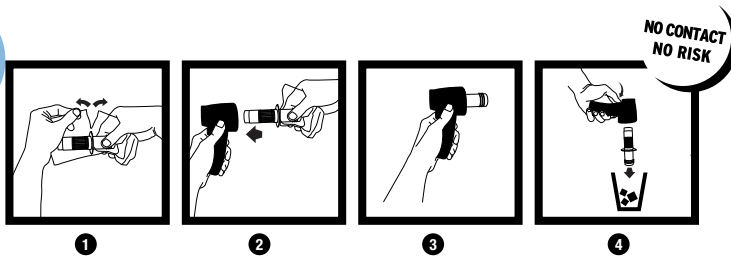
The single-use **Qflow<sup>®</sup>** sensors are developed specifically for use with the Spirolyser<sup>®</sup> Q13 spirometer.

**Qflow<sup>®</sup>** sensors are designed and adapted for respiratory function exploration tests (spirometry).

**Qflow<sup>®</sup>** sensors are designed so that their cumulative resistance to that of the Spirolyser<sup>®</sup> Q13 does not exceed ATS/ERS recommendations. So as to reduce to a minimum the risk of cross-contamination between patients, both the Spirolyser<sup>®</sup> Q13 and the **Qflow<sup>®</sup>** sensor employ innovative technology. Tests carried out by the Public Health England (Salisbury - UK) laboratory for bacteriological trials showed that the internal design of the product, associated with the **Qflow<sup>®</sup>** sensor, decreases the risk of cross-contamination to 99.999% if the **Qflow<sup>®</sup>** sensor is changed between each patient. Its innovative design also avoids contamination in the non-accessible internal parts.

Use	Single-use
Packaging	Individual non-sterile sachet
Expiry date	Refer to box label
Storage / Transport	T° 0°C - 50°C Humidity 75% max.
Medical Class	Ila

Pioneer  
Concept



## Qflow<sup>®</sup> sensor assembly in the Spirolyser<sup>®</sup> Q13: Steps 1, 2, 3

- Locate the dotted line opening part
- Hold it with one hand by the mouthpiece side (small side of packaging)
- With the other hand, open the detachable part of the Qflow<sup>®</sup> packaging along the dotted line
- Insert the Qflow<sup>®</sup> into the opening of the sensor as far as possible
- Remove and discard the rest of the packaging

## Eject Spirolyser<sup>®</sup> Q13 Qflow<sup>®</sup> sensor: Step 4

- Hold the device downwards, over a rubbish bin
- Locate the trigger at the back of the spirometer handle and push upwards
- The Qflow<sup>®</sup> sensor ejects



Unique!

**QFlow<sup>®</sup> Sensor**  
Packaging:  
box of 200



## WARNING

- Qflow<sup>®</sup> sensors are single-use
- Use of a sensor does not exempt the equipment from regular disinfection
- Used accessories should be disposed of with biologically soiled waste recycling





## PIPETTES AND TRAPPERS FOR TABATABA® V2 DEVICE

The FIM MEDICAL **pipettes and trappers** are accessories developed specifically for the TABATABA® v2 device (carbon monoxide (CO) detector in expired air).

### Pipette and trapper assembly:

- Remove trapper and pipette from the packaging
- Don't touch the mouth part of the pipette with the fingers; hold by the main part
- Insert the pipette into the trapper, then both onto the device

### Use:

- Change the single-use pipette systematically between each patient
- Change the single-use trapper systematically between each patient
- Use an alcohol-free, anti-bacterial, fungicidal wipe to clean the CO detector
- Do not breathe into the pipette (contamination risk)

### Waste Disposal:

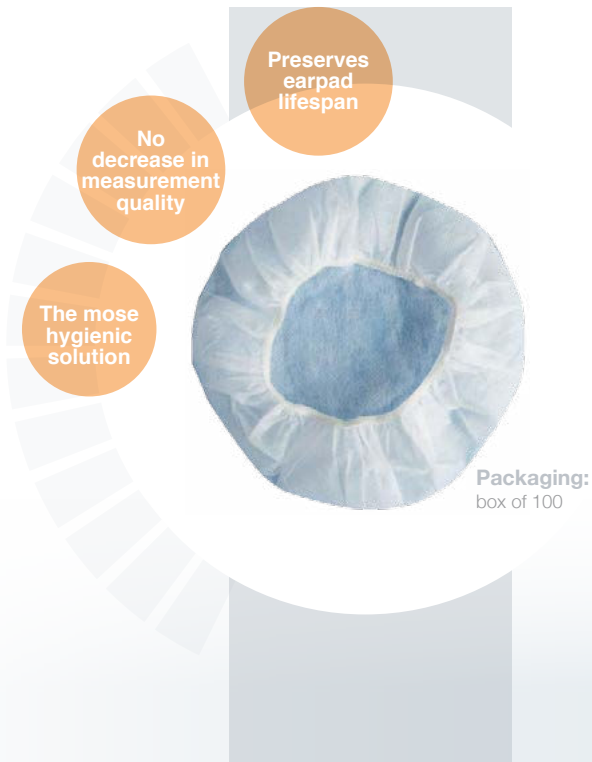
Used accessories should be disposed of with biologically soiled waste recycling.

Pipettes and trappers	Single-use
Packaging	Individual, non-sterile sachet
Expiry date	Refer to box label
Storage / Transport	T° 0°C - 50°C Humidity 75% max.
Medical Class	Classe Im



## WARNING

- Reserved for use by doctors or health professionals
- Always use the pipette and trapper together on a TABATABA® V2 device



## PACK OF BIOCOMPATIBLE, SINGLE-USE EARPARD COVERS

for all your audiometric  
and automatic vision tests.

### Diameters:

Earpad covers for Audiolyser® : 11 cm. Earpad covers for Visioclick® : 8 cm

### Installation:

Place the disposable earpad cover onto each earphone.

### Use:

Systematically change the disposable earphone cover between patients.

### Disposal:

Used or dirty accessories must be disposed of with biological waste (DASRI).